

“

A BEST IN CLASS,  
INNOVATIVE, PRICE  
COMPETITIVE AND HIGH  
QUALITY PERFORMING  
ENGINEERING  
ENTERPRISE.

## CONTACT US

PLOT NO. 22, MAA KALKA MARG, GURUKUL  
INDUSTRIAL AREA,  
SECTOR 38, FARIDABAD

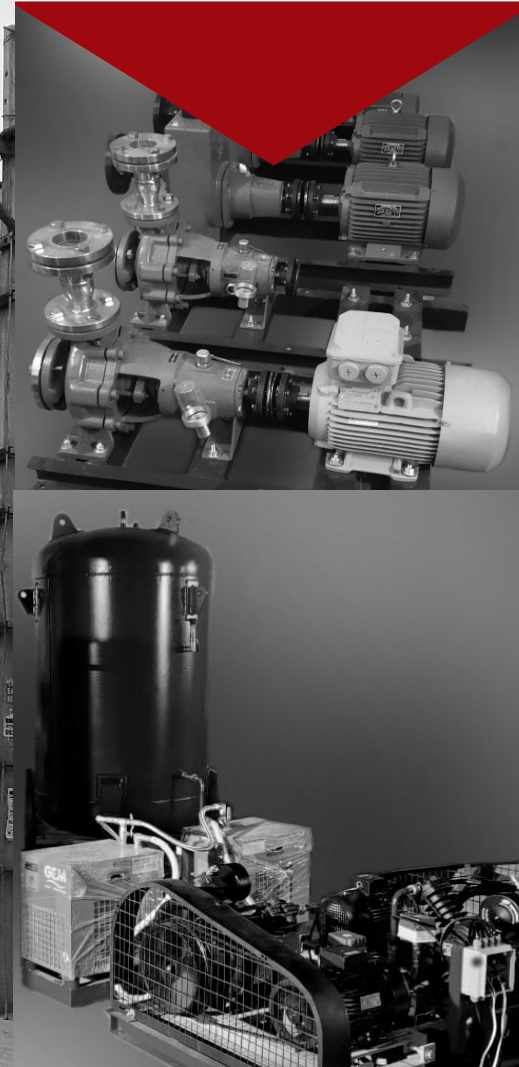
Ph.: +91 9891345001; 8851349219

Mail: [info.controls@buchiya.com](mailto:info.controls@buchiya.com)

Visit us at: [www.buchiya.com](http://www.buchiya.com)



**BUCHIYA**  
**CONTROLS PRIVATE**  
**LIMITED**  
SERVES NEED OF ALL TYPE OF  
INDUSTRIES



WATER SYSTEMS



# WATER SYSTEMS BY BCPL



**Buchiya**

... Serves need of all type of industries

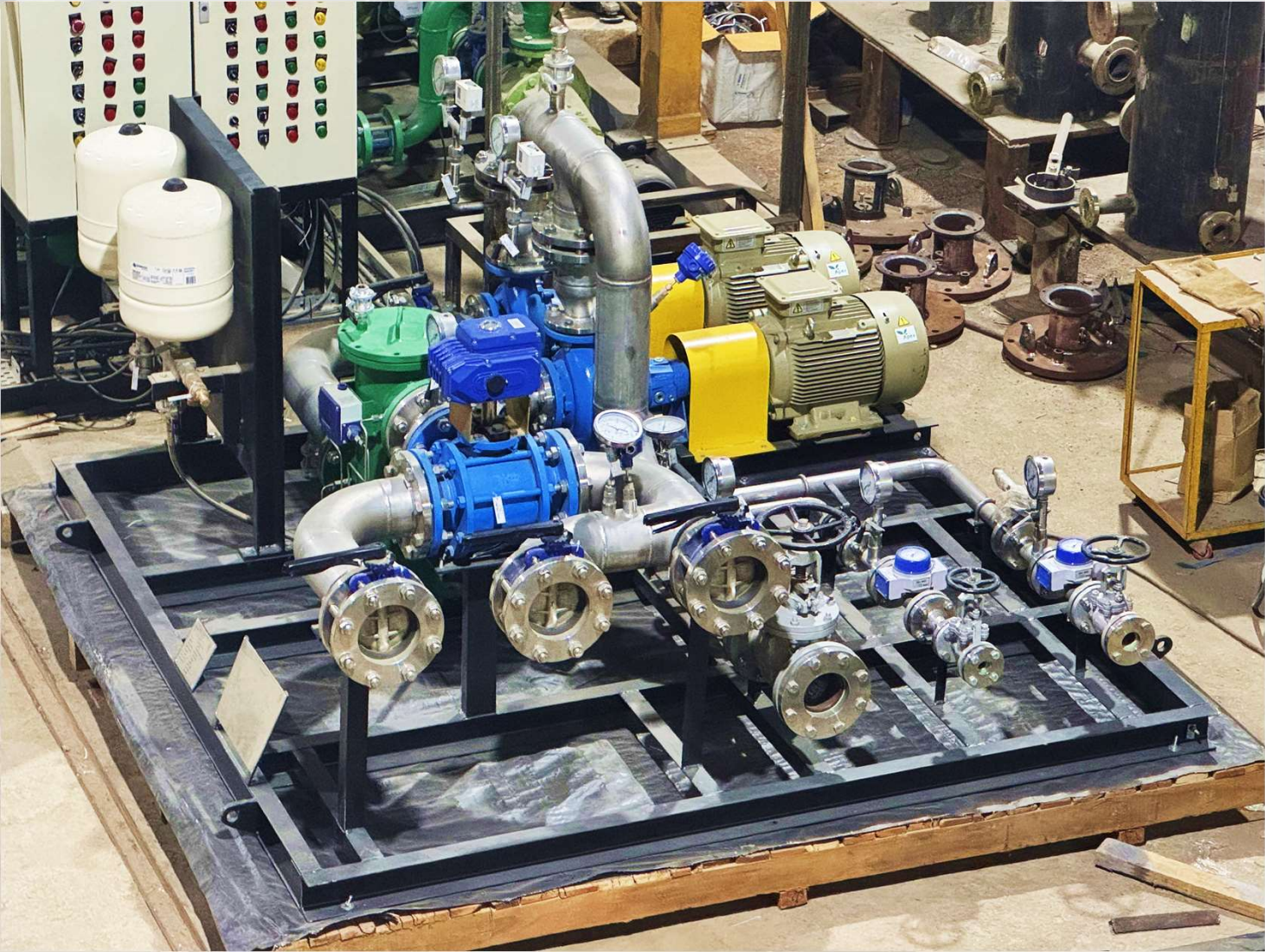
## TUBE TYPE HEAT EXCHANGERS





# WATER SYSTEMS BY BCPL

KABELI-3 CWS, NEPAL



COOLING WATER SKID

| Sr.No. | Item            | Details  |
|--------|-----------------|----------|
| 1      | FLOW            | 1340 Lpm |
| 2      | FILTRATION      | 100u     |
| 3      | DESIGN PRESSURE | 3 Bar    |

HEAT EXCHANGER





# WATER SYSTEMS BY BCPL

## MID HONG-A CWS , NEPAL



| Sr.No. | Item                    | Details  |
|--------|-------------------------|----------|
| 1      | COOLING WATER FLOW RATE | 1195 Lpm |
| 2      | FILTRATION              | 100u     |
| 3      | DESIGN PRESSURE         | 3 Bar    |



**HEAT EXCHANGER**  
**2400 X 2100 X 400 mm**



# WATER SYSTEMS BY BCPL

MID HONGU-B CWS , NEPAL



COOLING WATER SKID

| Sr.No. | Item            | Details  |
|--------|-----------------|----------|
| 1      | FLOW            | 1322 Lpm |
| 2      | FILTRATION      | 100u     |
| 3      | DESIGN PRESSURE | 3 Bar    |



HEAT EXCHANGER

2320 X 3795 X 870 mm



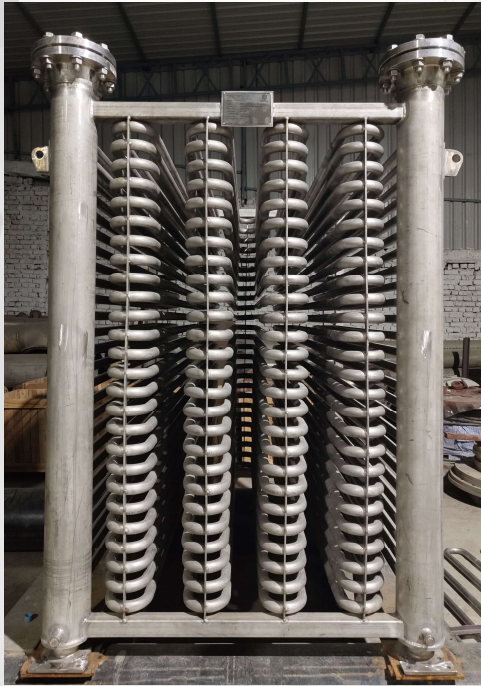
# WATER SYSTEMS BY BCPL

SUCHHU, BHUTAN

TUBE TYPE, SIZE- 25 NB (1")

HEAT EXCHANGER

| Sr.No. | Item      | Details   |
|--------|-----------|-----------|
| 1      | FLOW      | 1040 Lpm  |
| 2      | HEAT LOAD | 362.85 KW |
| 4      | MOC       | SS304     |





# WATER SYSTEMS BY BCPL

JALDHARA, SIKKIM

TUBE TYPE, SIZE-19mm (OD)

HEAT EXCHANGER

| Sr.No. | Item      | Details  |
|--------|-----------|----------|
| 1      | FLOW      | 767 Lpm  |
| 2      | HEAT LOAD | 348.3 KW |
| 4      | MOC       | SS 316 L |





# WATER SYSTEMS BY BCPL

LIPING KHOLA (17.9 MW), NEPAL

HEAT EXCHANGER

TUBE TYPE,  
SIZE- 25 NB (1")

| Sr.No. | Item      | Details   |
|--------|-----------|-----------|
| 1      | FLOW      | 1040 Lpm  |
| 2      | HEAT LOAD | 362.85 KW |
| 4      | MOC       | SS304     |





# WATER SYSTEMS BY BCPL

## KAWARSI (15 MW), HIMACHAL PRADESH

TUBE TYPE, SIZE- 1 ½” (40NB)

| Sr.No. | Item      | Details  |
|--------|-----------|----------|
| 1      | FLOW      | 115 Lpm  |
| 2      | HEAT LOAD | 56.93 KW |
| 4      | MOC       | SS304    |





# WATER SYSTEMS BY BCPL

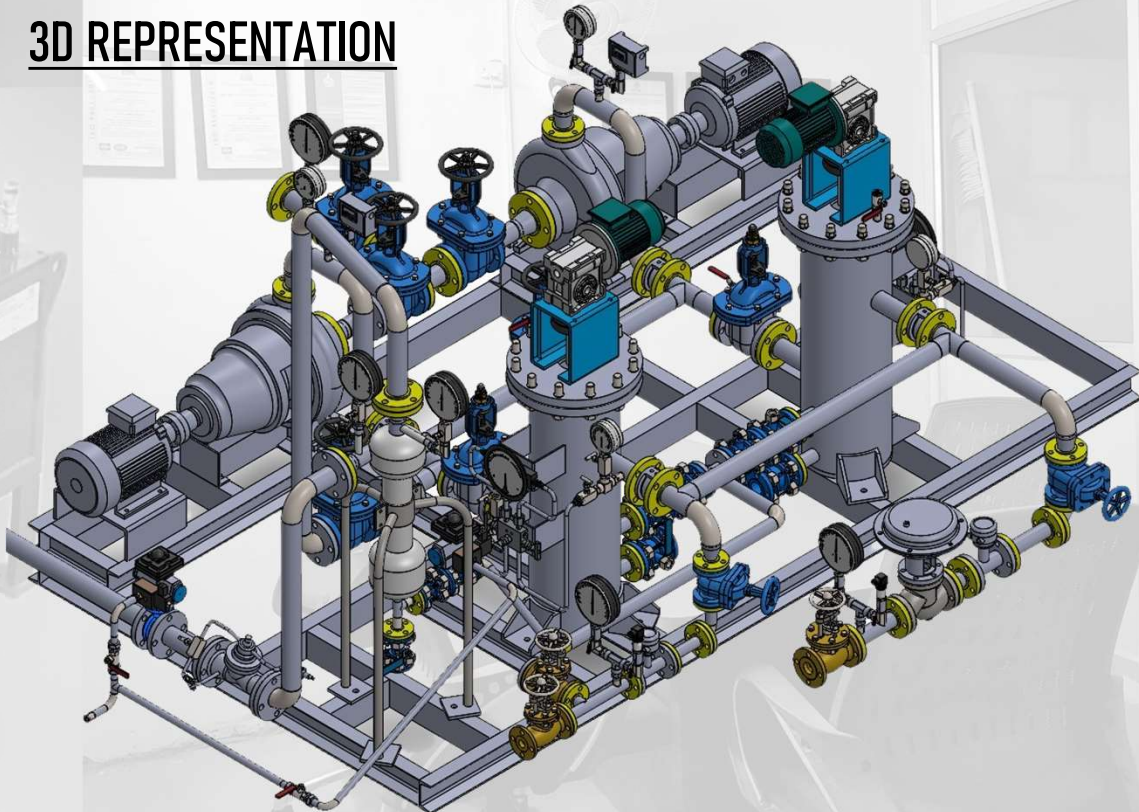
KIRU HEP (624 MW), JAMMU & KASHMIR

TURBINE SHAFT SEAL CONTROL PANEL



| Sr.No. | Item            | Details |
|--------|-----------------|---------|
| 1      | FLOW            | 207 Lpm |
| 2      | FILTRATION      | 50µ     |
| 3      | DESIGN PRESSURE | 10 BAR  |

3D REPRESENTATION

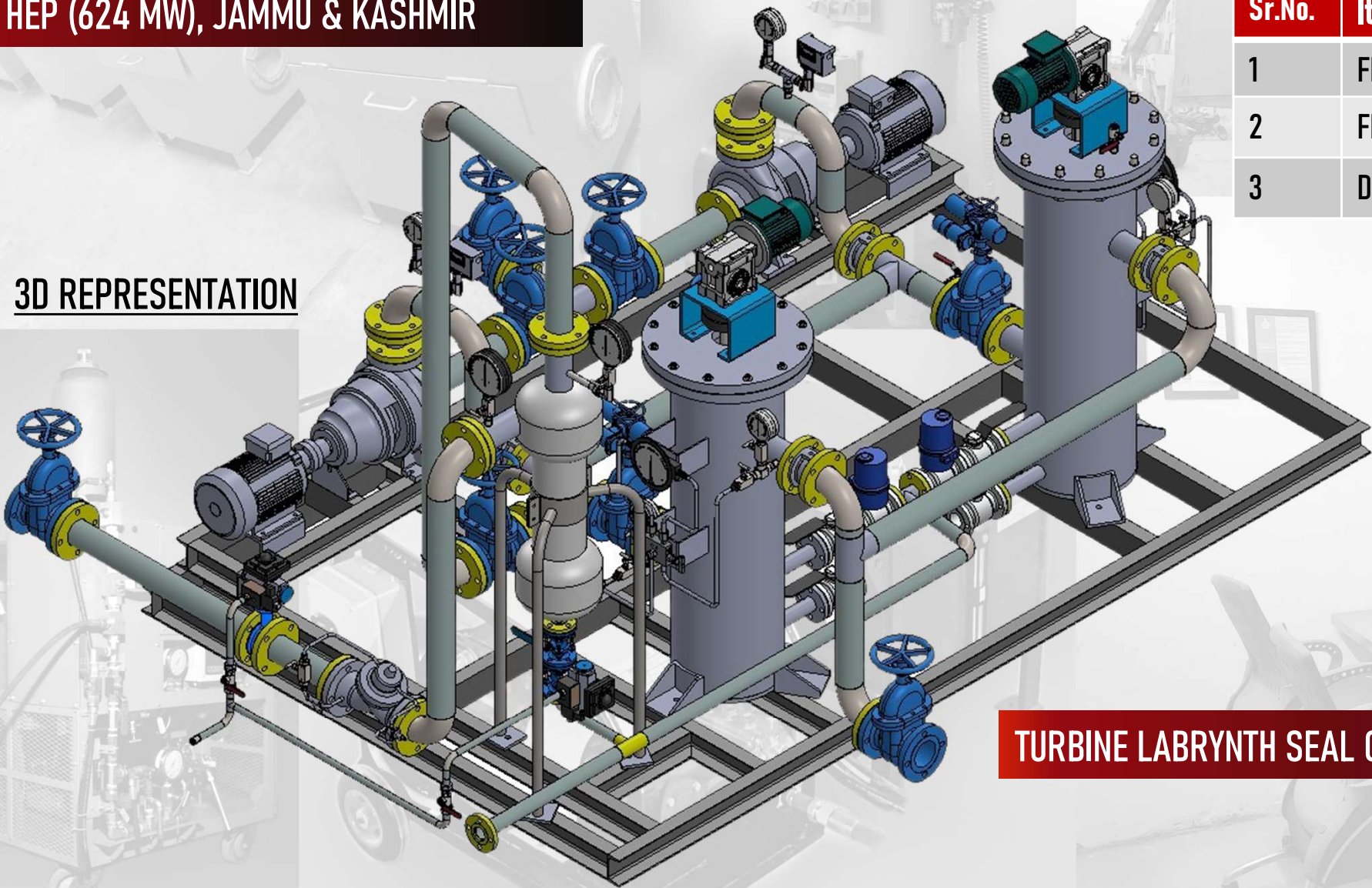




# WATER SYSTEMS BY BCPL

KIRU HEP (624 MW), JAMMU & KASHMIR

3D REPRESENTATION



| Sr.No. | Item            | Details |
|--------|-----------------|---------|
| 1      | FLOW            | 690 Lpm |
| 2      | FILTRATION      | 50μ     |
| 3      | DESIGN PRESSURE | 10 BAR  |

TURBINE LABRYNTH SEAL COOLING WATER SUPPLY PANEL



# WATER SYSTEMS BY BCPL

## PINNAPURAM (1.2GW), ANDHRA PRADESH



| Sr. No. | Item            | Details |
|---------|-----------------|---------|
| 1       | FLOW            | 220 Lpm |
| 2       | FILTRATION      | 50u     |
| 3       | DESIGN PRESSURE | 13 Bar  |



## SHAFT SEAL PANEL





# WATER SYSTEMS BY BCPL



... Serves need of all type of industries

## DUPLEX FILTER MULTI & SINGLE CARTRIDGE, SIZE- 15NB TO 400 NB

| Sr.No. | Item            | Details  |
|--------|-----------------|----------|
| 1      | FLOW            | 3300 Lpm |
| 2      | FILTRATION      | 100u     |
| 3      | DESIGN PRESSURE | 6 Bar    |





# WATER SYSTEMS BY BCPL



| PUMP MOTOR SKIDS |                          |             |
|------------------|--------------------------|-------------|
| Sr. No.          | Item                     | Details     |
| 1                | SUBMERSIBLE PUMPS/MOTORS | AS PER REQ. |
| 2                | HORIZONTAL PUMPS/MOTORS  | AS PER REQ. |

| DUPLEX FILTERS |                |              |
|----------------|----------------|--------------|
| Sr. No.        | Item           | Details      |
| 1              | DUPLEX FILTERS | 15NB - 400NB |





# WATER SYSTEMS BY BCPL

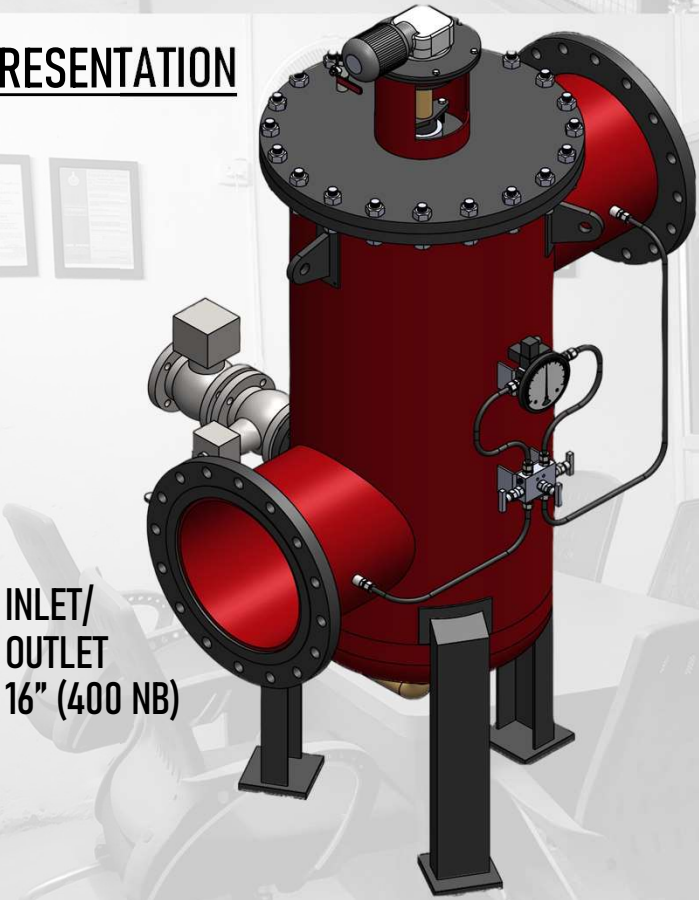
KOPILI HEP (200MW), (ASSAM)

AUTO BACKWASH SELF CLEANING FILTER



| Sr.No. | Item       | Details   |
|--------|------------|-----------|
| 1      | FLOW       | 828 m3/hr |
| 2      | FILTRATION | 2000μ     |

### 3D REPRESENTATION





# WATER SYSTEMS BY BCPL



**KOPII HEP (200MW), (ASSAM)**

**CYCLONE SEPERATOR**

INLET/ OUTLET- 8" (200 NB)



| Sr.No. | Item       | Details  |
|--------|------------|----------|
| 1      | FLOW       | 3300 LPM |
| 2      | FILTRATION | 75μ      |





# WATER SYSTEMS BY BCPL

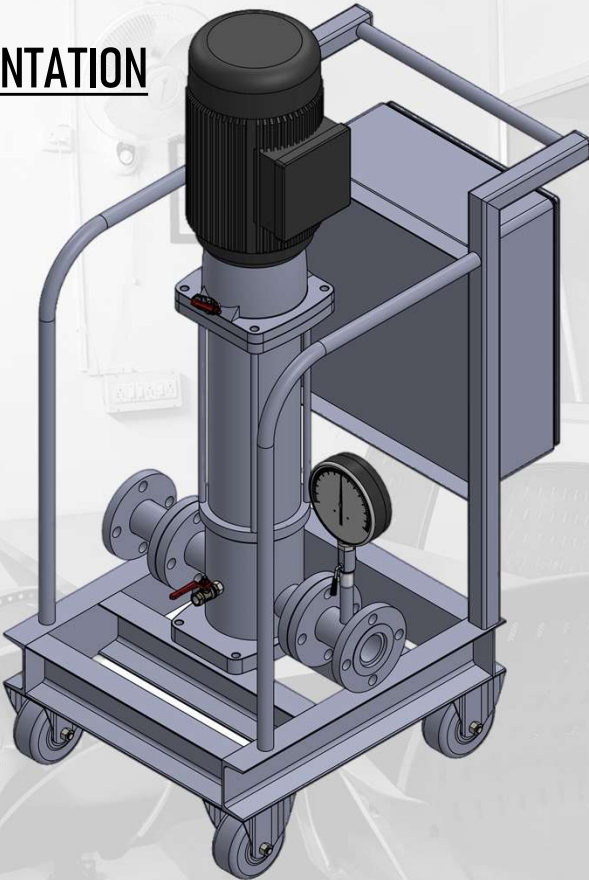
PINNAPURAM PSP (600 MW), ANDHRA PRADESH

HIGH PRESSURE PUMPS



| Sr.No. | Item            | Details |
|--------|-----------------|---------|
| 1      | FLOW            | 220 Lpm |
| 3      | DESIGN PRESSURE | 7.5 Bar |

## 3D REPRESENTATION





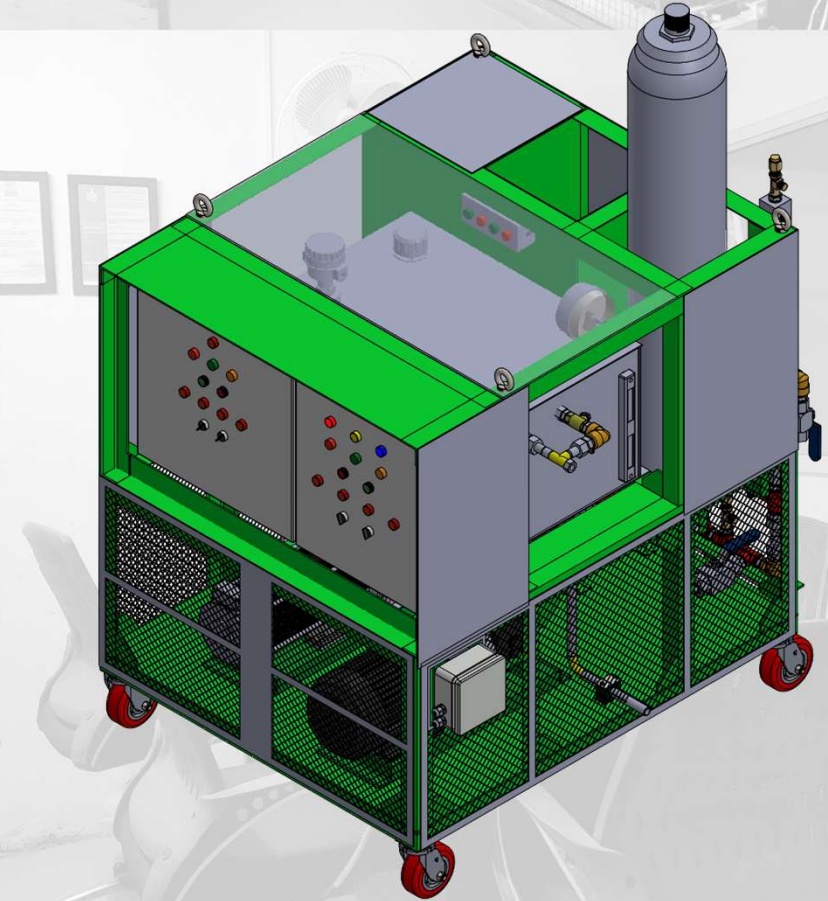
# WATER SYSTEMS BY BCPL

SHONGTANG KARCHHAM (430 MW), HIMACHAL PRADESH

MIV SEAL OPERATING SYSTEM

COMMON  
FOR  
3 UNITS

| S.No. | Item          | Details                       |
|-------|---------------|-------------------------------|
| 1     | TANK CAPACITY | 100 Ltrs.                     |
| 2     | MOTORS/PUMPS  | 3 H.P AC & DC/ 10 LPM @70 BAR |





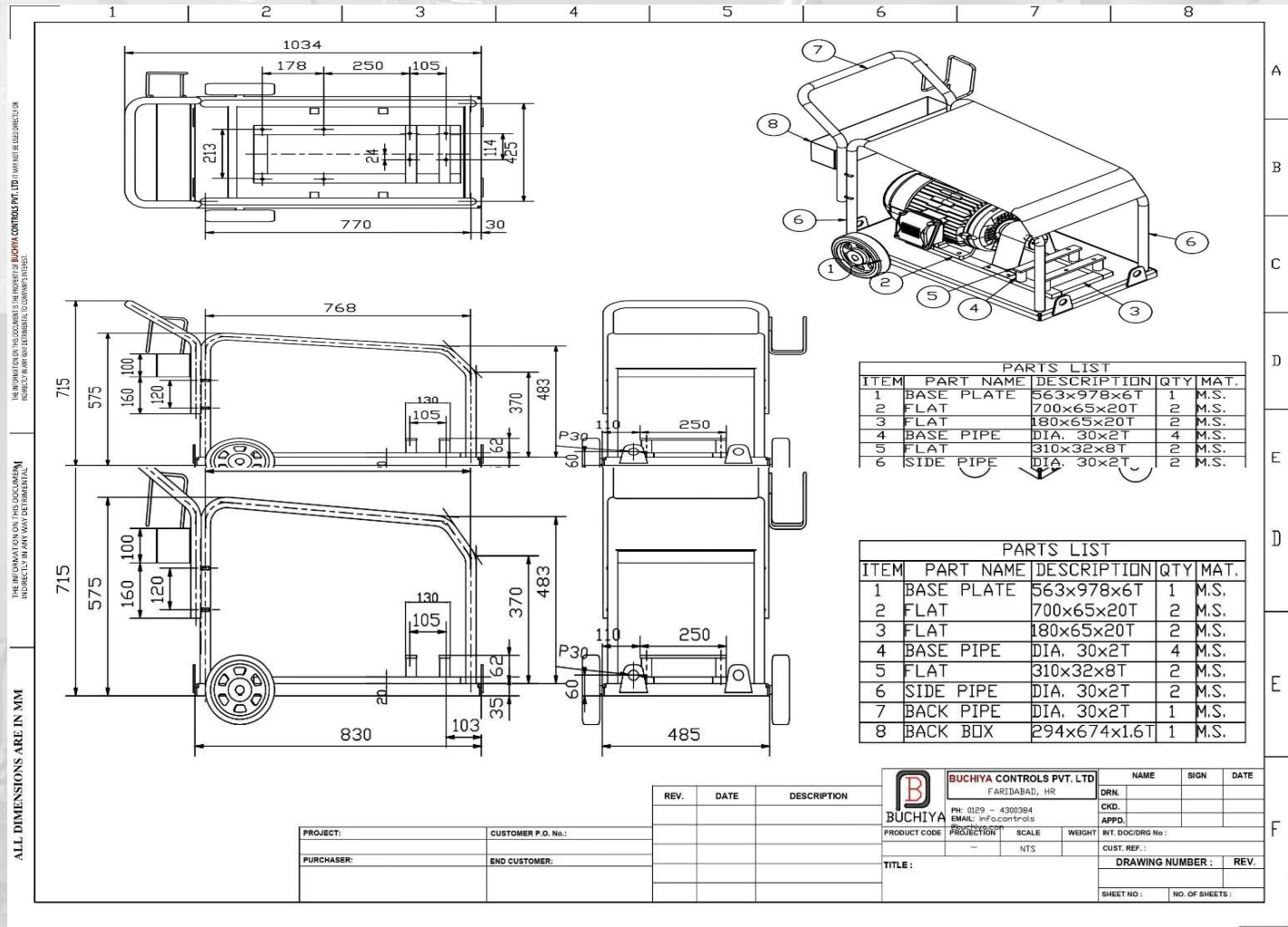
# WATER SYSTEMS BY BCPL



... Serves need of all type of industries

## UPPER TAMA KOSHI (465 MW), NEPAL

## HIGH PRESSURE PUMPS



| Sr.No. | Item          | Details                   |
|--------|---------------|---------------------------|
| 1      | TANK CAPACITY | 100 Ltrs.                 |
| 2      | MOTOR / PUMP  | 10 H.P / 30 LPM @ 120 BAR |







**Buchiya**

... Serves need of all type of industries

# THANK YOU